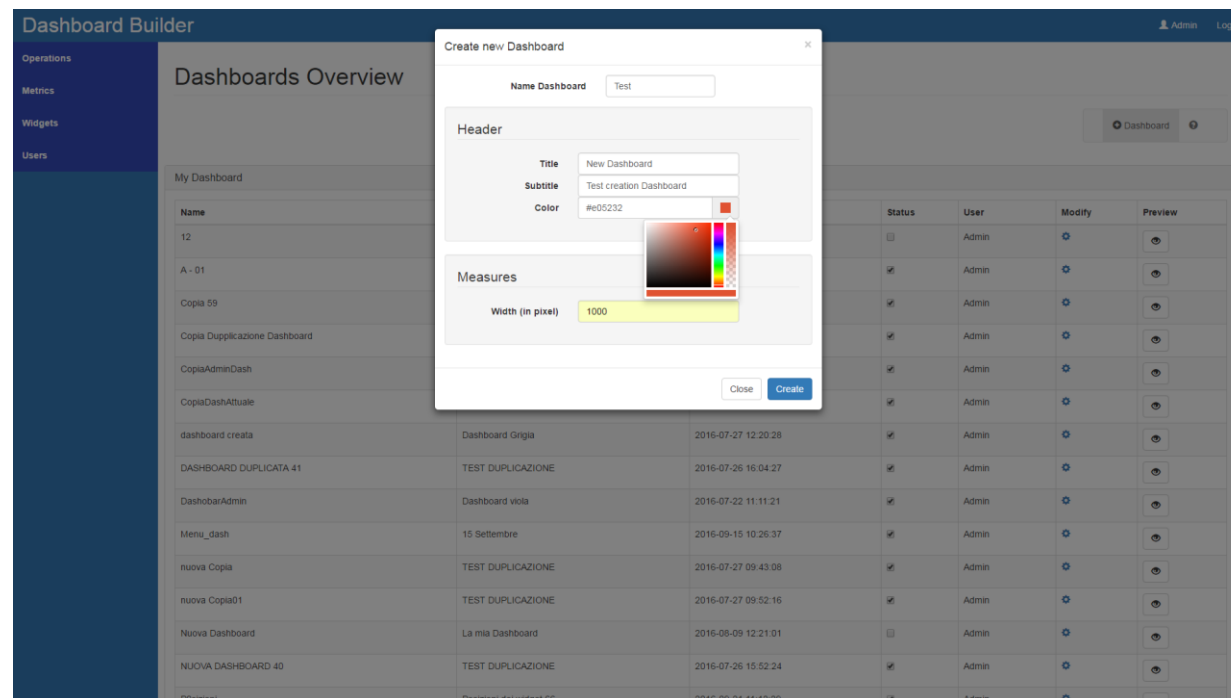


Dashboard Builder

Widgets user manual



UNIVERSITÀ
DEGLI STUDI
FIRENZE

DINFO
DIPARTIMENTO DI
INGEGNERIA
DELL'INFORMAZIONE

DISIT
DISTRIBUTED SYSTEMS
AND INTERNET
TECHNOLOGIES LAB

www.disit.org

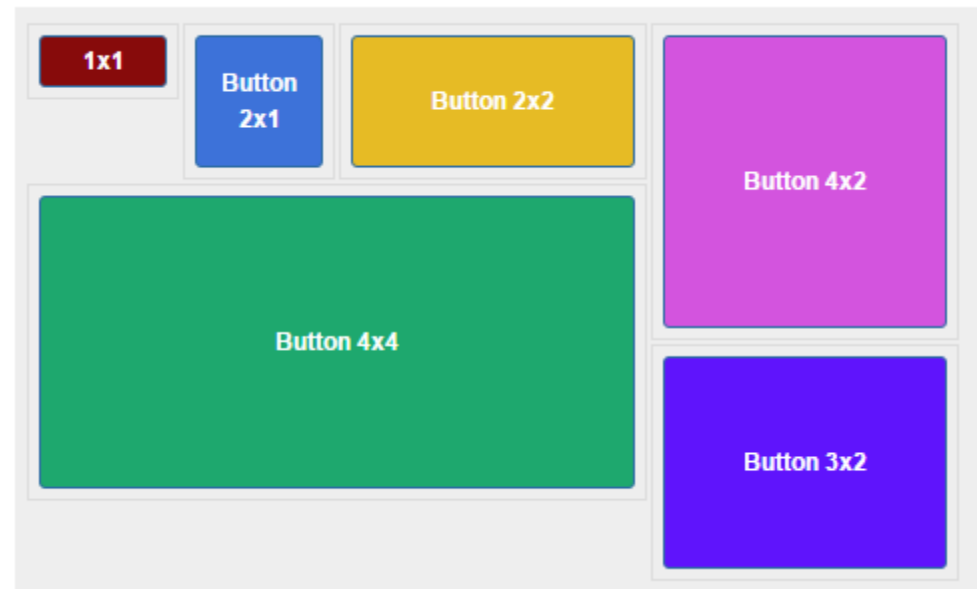
ver. 0.2, October 21, 2016



www.km4city.org

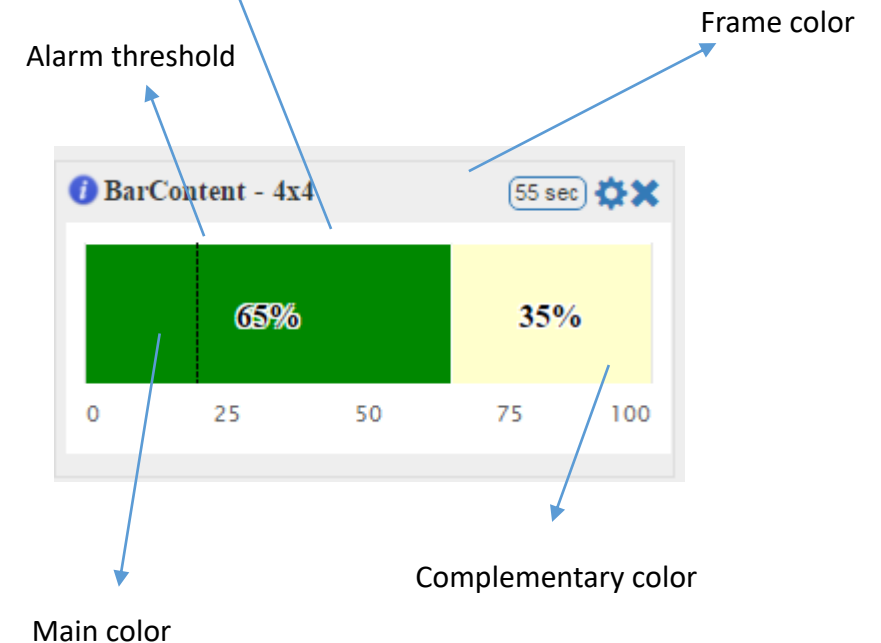
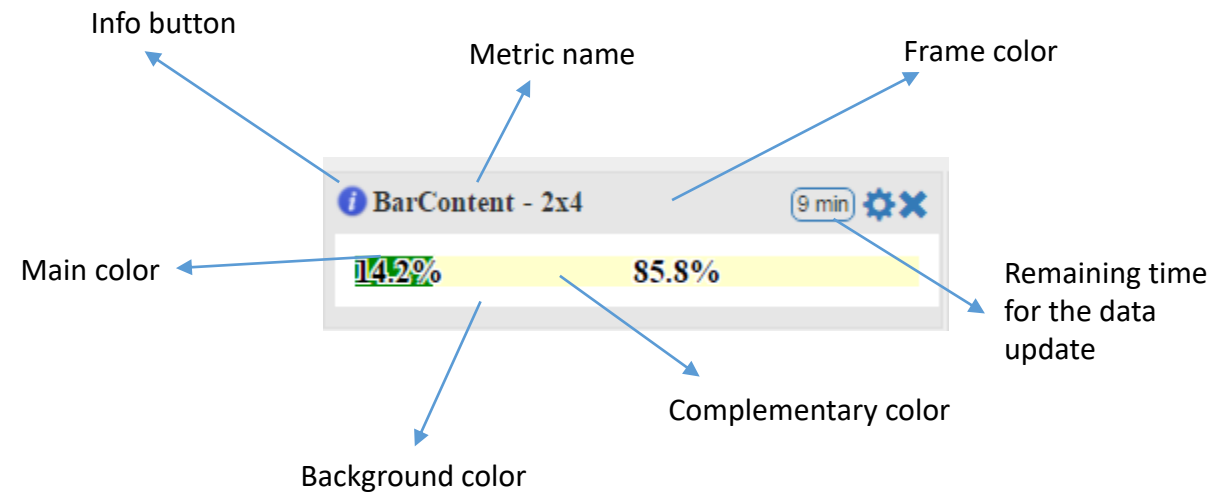
Widget «Button»

- **Dimensions:** variables
- **Columns:** from 1 to 4
- **Lines:** from 1 to 8
- **Visualized metrics:** 0 (it is only a command)
- **Editing properties:** text, background color, hover color, action command
- **Type of data:** n/a
- **Behavior in case of alarm:** n/a



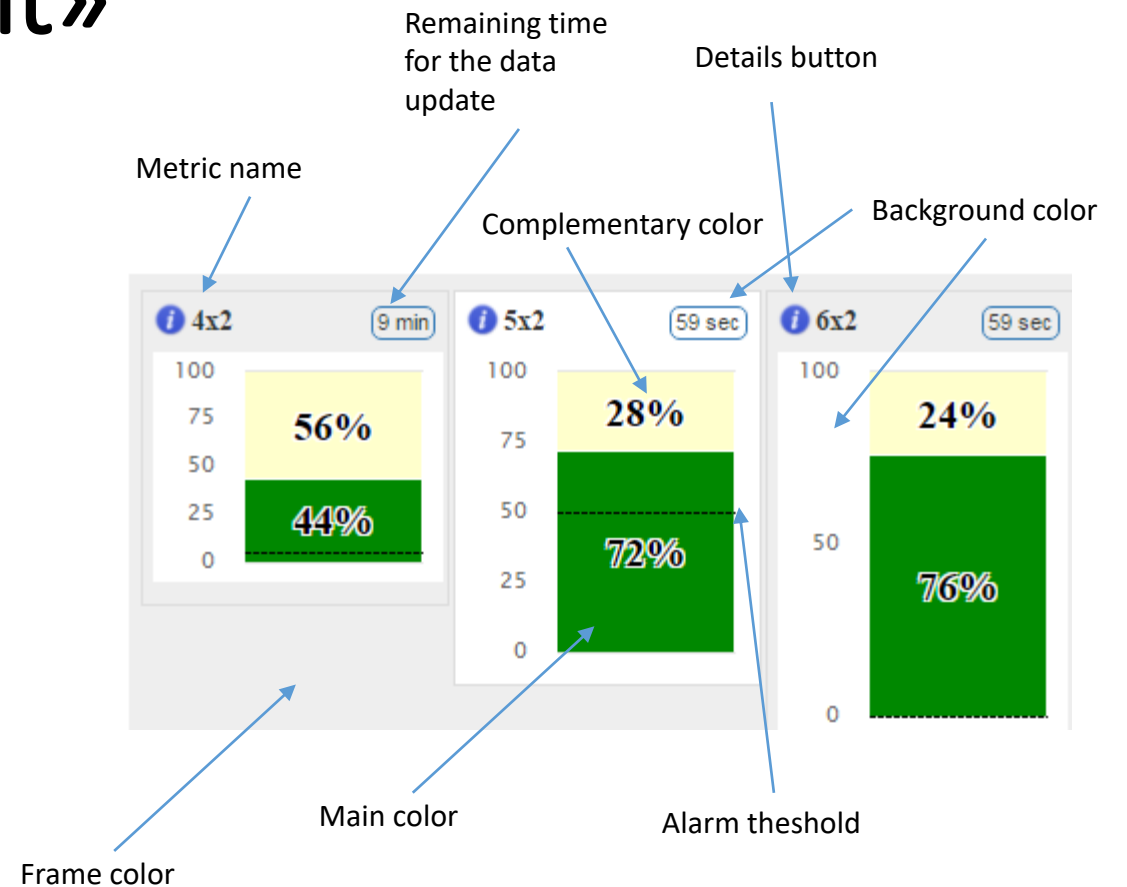
Widget «Bar Content»

- **Dimensions:** variables but predefined (2x4, 4x4)
- **Visualized metrics:** 1
- **Editing properties:** frame color, background color, title, alarm threshold, alarm comparison operator, main color, complementary color, frequency of update.
- **Type of data:** percentage.
- **Behavior in case of alarm:** flashing title background, the complementary color changes from the one chosen by the user to red.



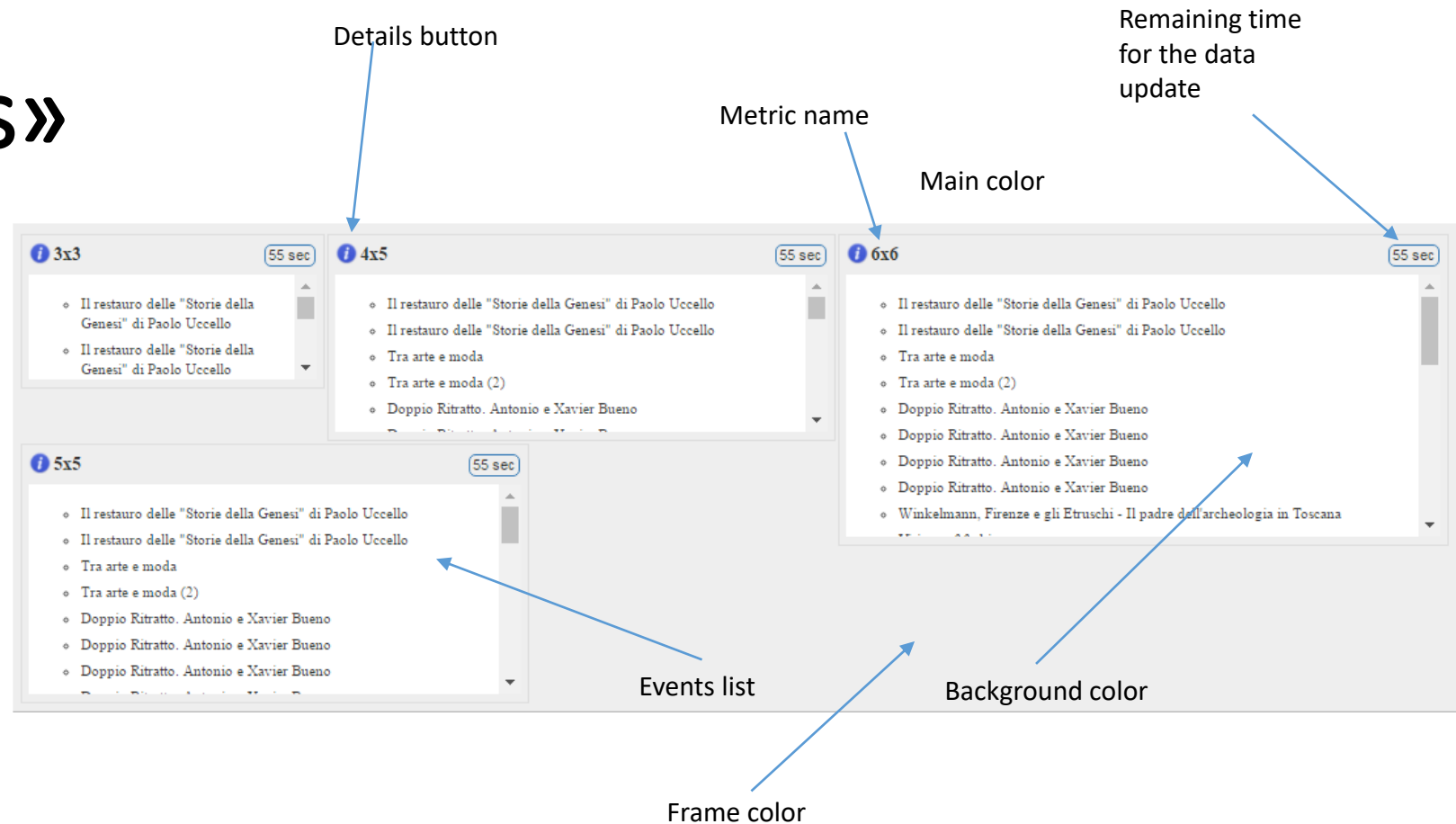
Widget «Column Content»

- **Dimensions:** variables but predefined (4x2, 5x2, 6x2)
- **Columns:** 2
- **Lines:** 4, 5, or 6
- **Visualized metrics:** 1
- **Editing properties:** Frame color, Background color, title, Alarm threshold, alarm comparison operator, Main color, Complementary color, frequency of update.
- **Type of data:** percentage.
- **Behavior in case of alarm:** flashing title background, the complementary color changes from the one chosen by the user to red.



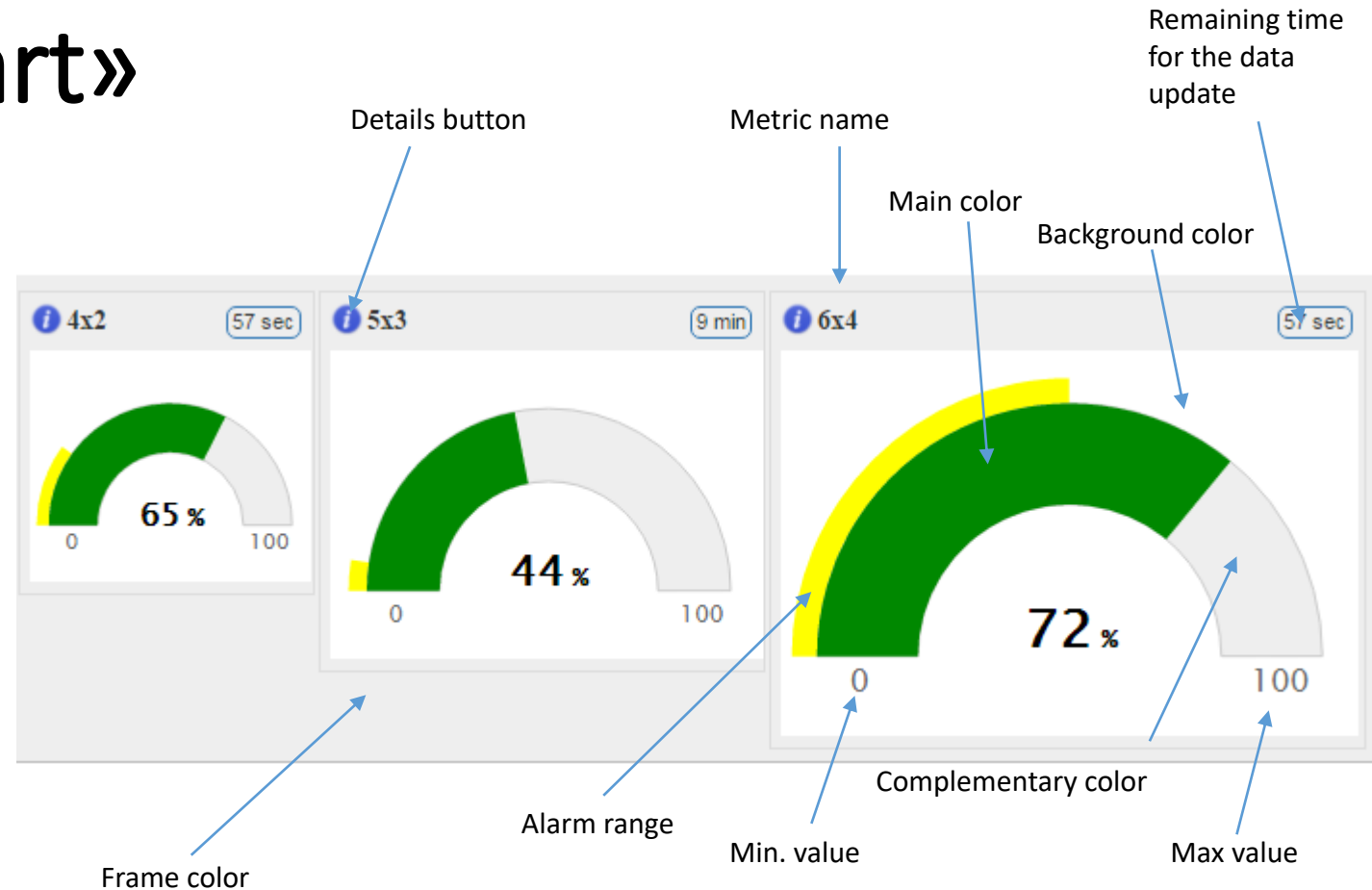
Widget «Events»

- **Dimensions:** variables
- **Columns:** from 3 to 6
- **Lines:** from 3 to 6
- **Visualized metrics:** 1
- **Editing properties:** Background color, title, frame color, frequency of update.
- **Type of data:** textual
- **Behavior in case of alarm:** n/a.



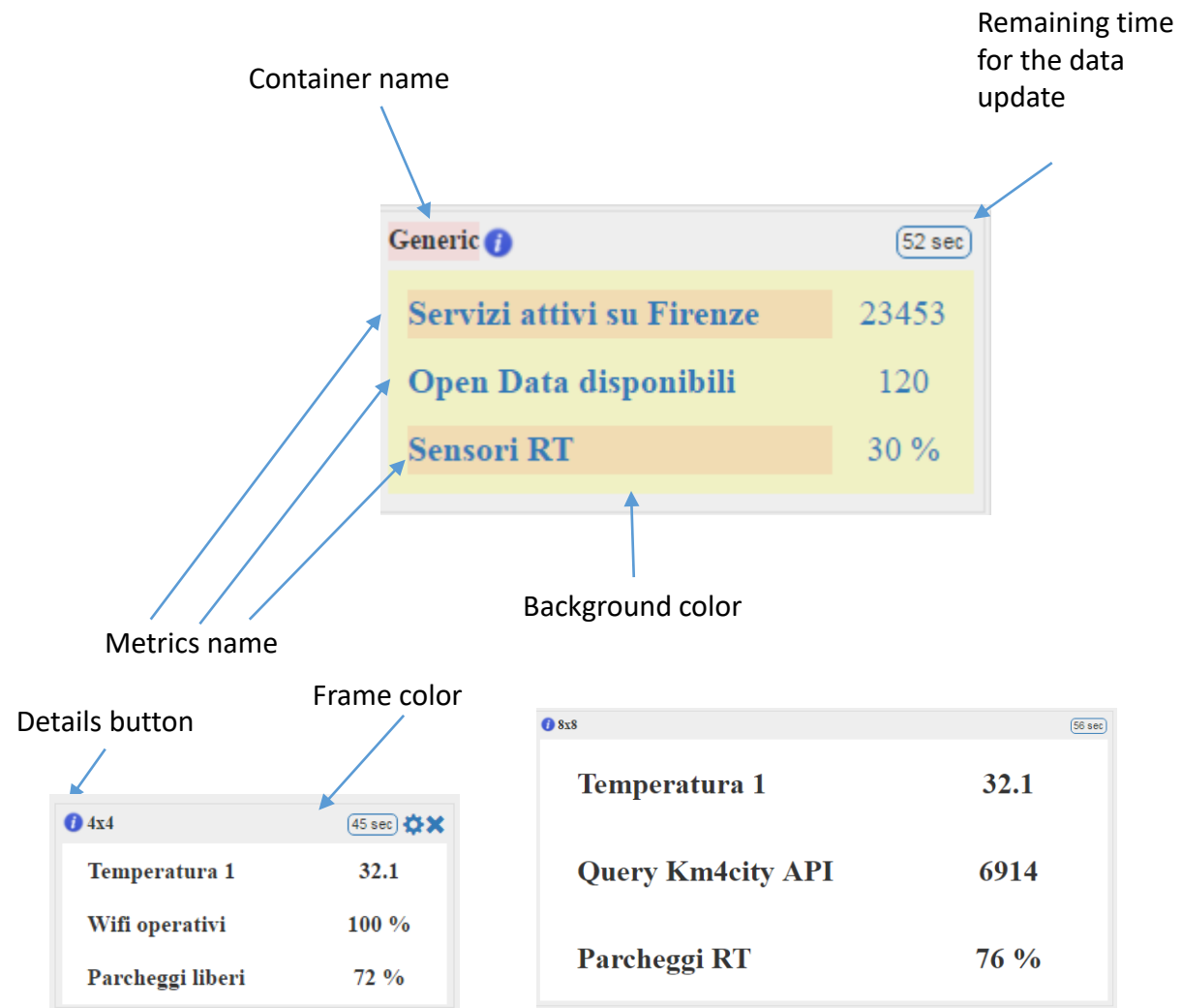
Widget «Gauge Chart»

- **Dimensions:** variables but predefined (4x2, 5x3, 6x4)
- **Columns:** 2, 3 or 4
- **Lines:** 4, 5 or 6
- **Visualized metrics:** 1
- **Editing properties:** Background color, title, Alarm threshold, alarm comparison operator, Main color, Complementary color, frequency of update, minimum showed value, max showed value, Alarm range, Frame color.
- **Type of data:** integer, float, percentage.
- **Behavior in case of alarm:** flashing title background, the Main color changes from the one, to the second color set by the user.



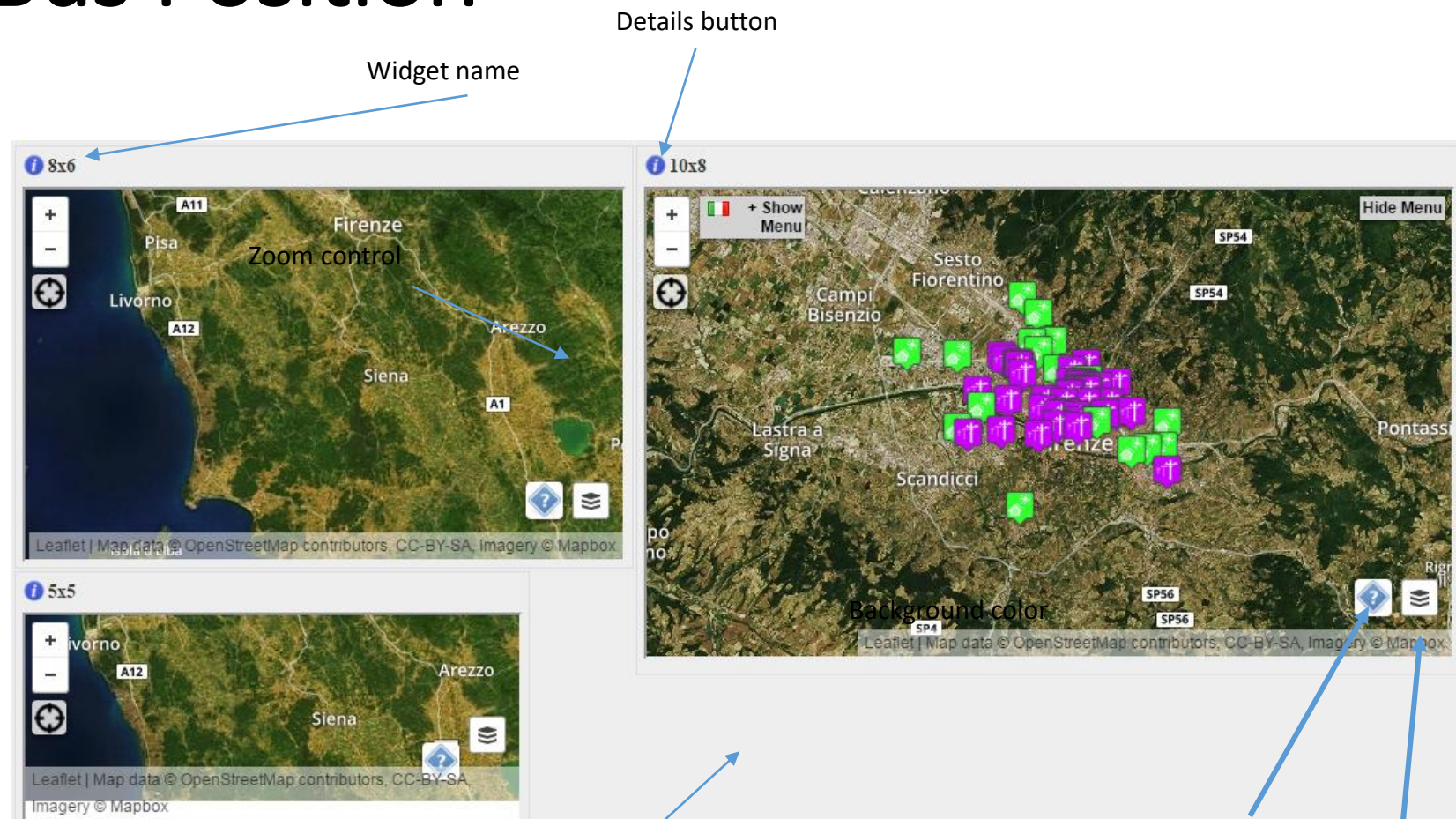
Widget “Generic Content”

- **Dimensions:** variables
- **Columns:** from 4 to 8
- **Lines:** from 4 to 8
- **Visualized metrics:** up to 3
- **Editing properties:** Background color, title, Alarm threshold for every metric, alarm comparison operator for every metric, frequency of update, frame color.
- **Type of data:** integer, float, percentage, textual.
- **Behavior in case of alarm:** flashing title background, the complementary color changes from the one chosen by the user to red.



Widget “Map Bus Position”

- **Dimensions:** variables
- **Columns:** from 4 to 8
- **Lines:** from 4 to 10
- **Visualized metrics:** up to 3
- **Type of data:** associated only to the metric *Bus_position_Map* (textual)
- **Note:** this widget can be personalised by editing a simple PHP
- **Editing properties:** Background color, title, frequency of update, frame color.



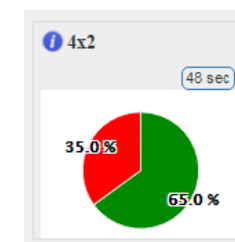
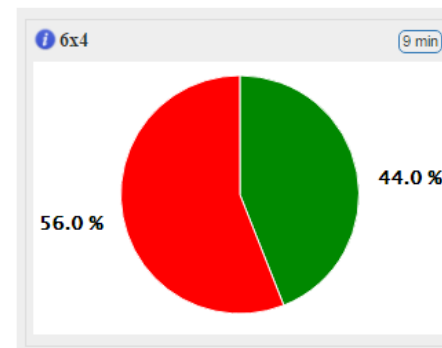
Frame color

Link to DISIT Service Map Description

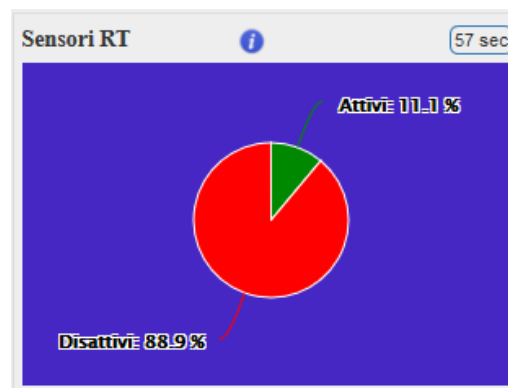
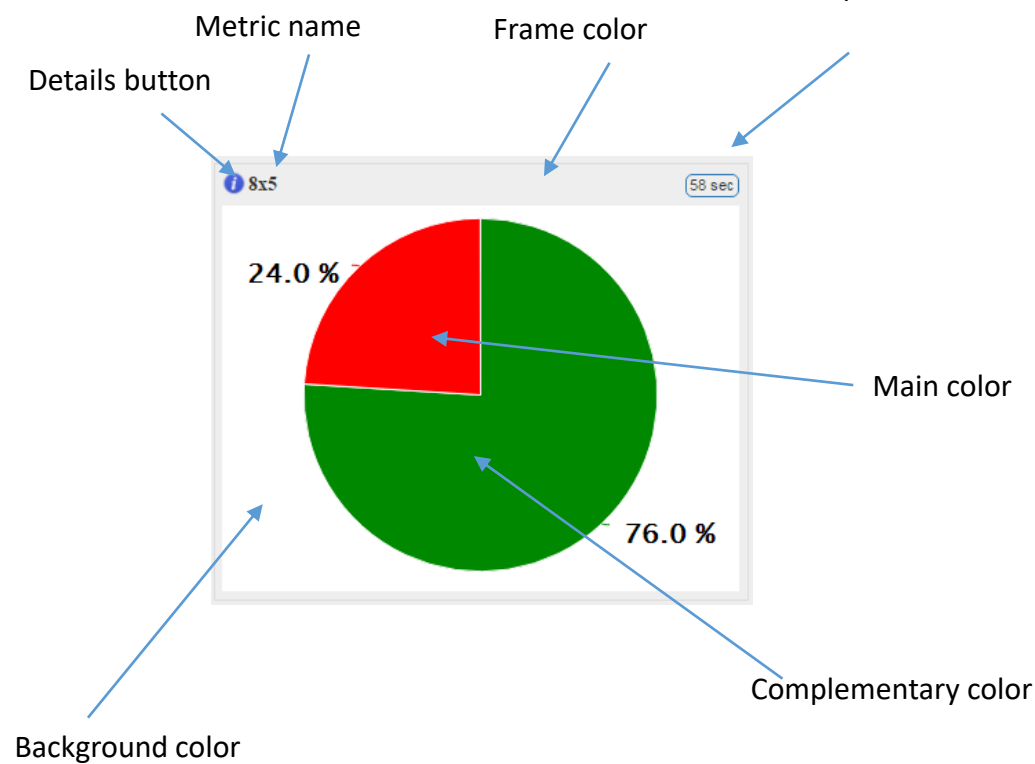
Kind of map visualised

Widget “Pie Chart”

- **Dimensions:** variables but predefined (4x2, 6x4, 8x5)
- **Columns:** 2, 4 or 5
- **Lines:** 4, 6 or 8
- **Visualized metrics:** 1
- **Editing properties:** Background color, title, Alarm threshold, alarm comparison operator, Main color, Complementary color, frame color, frequency of update.
- **Type of data:** percentage.
- **Behavior in case of alarm:** flashing title background.

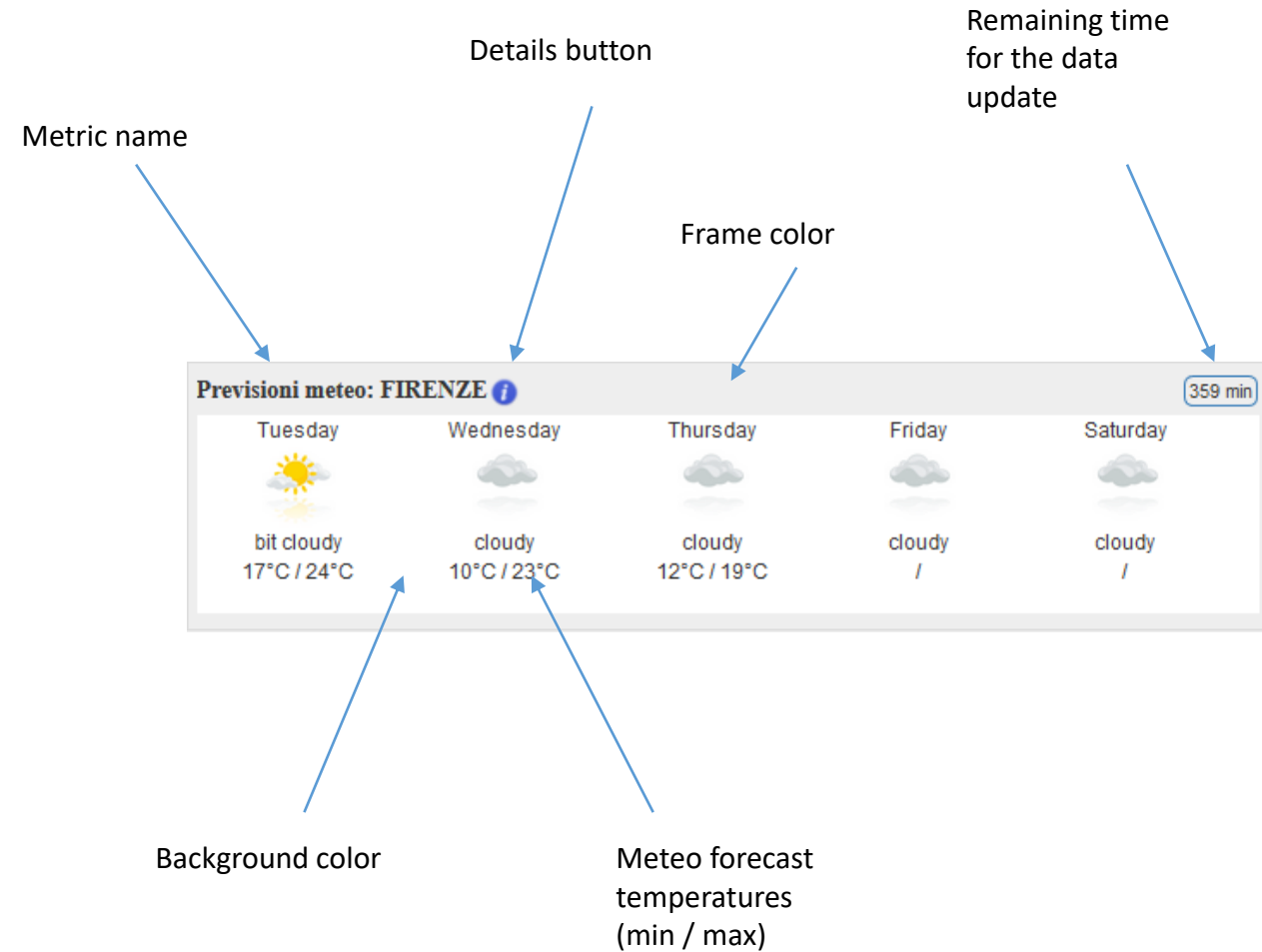


Remaining time for the data update



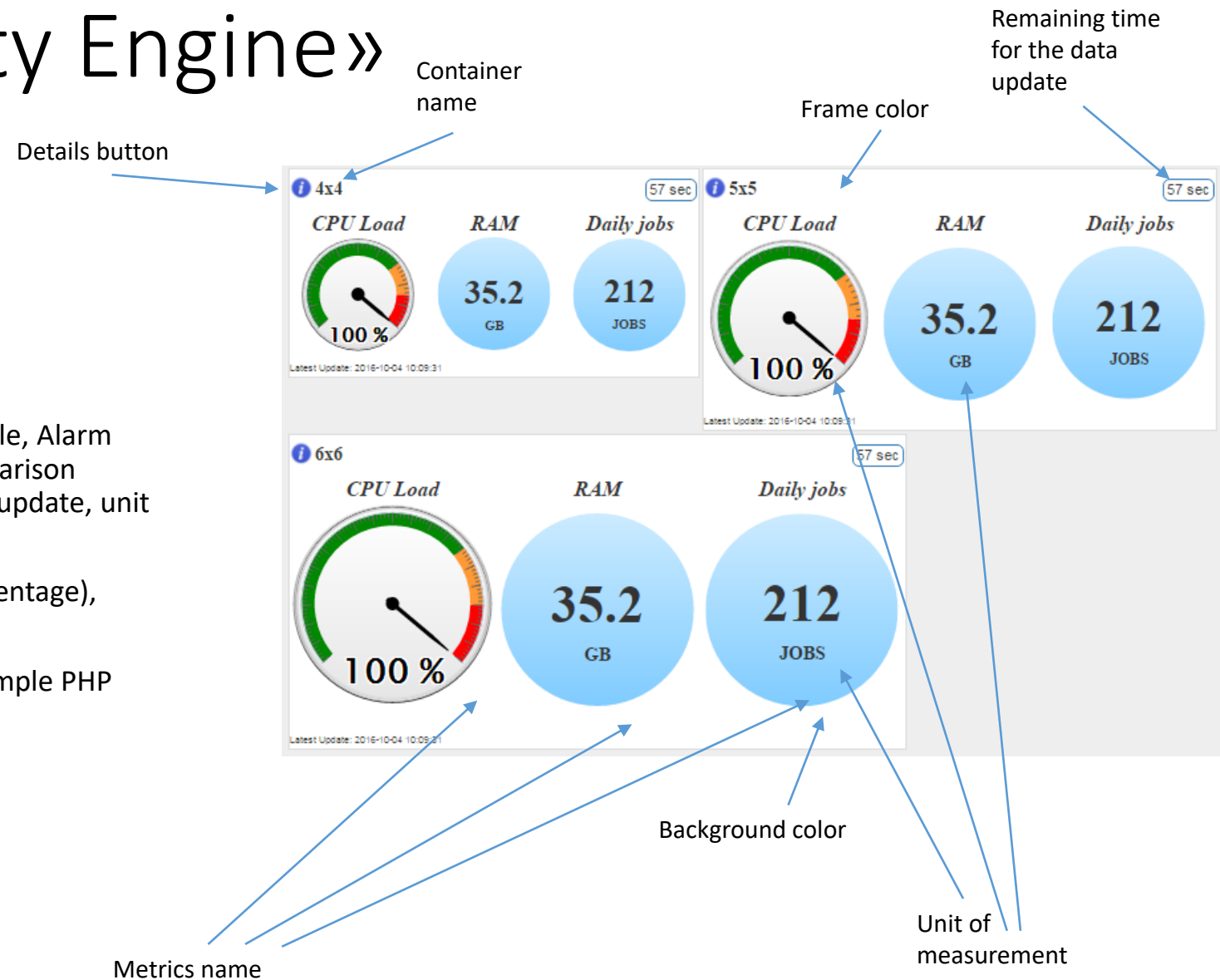
Widget “Prev Meteo”

- **Dimensions:** fixed
- **Columns:** 4
- **Lines:** 2
- **Visualized metrics:** 1
- **Editing properties:** Background color, frame color, title, Alarm threshold, alarm comparison operator, frequency of update.
- **Type of data:** percentage.
- **Behavior in case of alarm:** flashing title background.



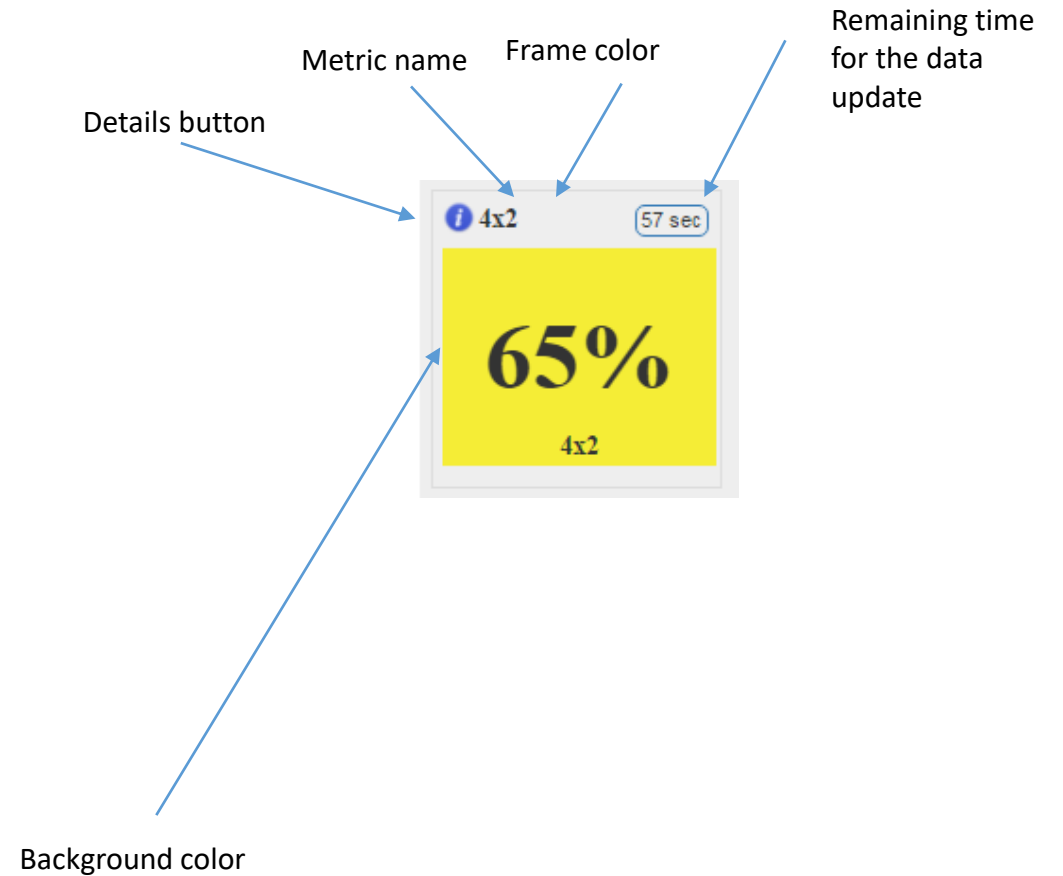
Widget «Smart City Engine»

- **Dimensions:** variables but predefined (4x4, 5x5, 6x6)
- **Columns:** 4, 5 or 6
- **Lines:** 4, 5 or 6
- **Visualized metrics:** 1
- **Proprietà settabili:** Background color, frame color, title, Alarm threshold per ciascuna metrica mostrata, alarm comparison operator di ciascuna metrica mostrata, frequency of update, unit of measurement.
- **Tipi di dati:** Associated to the metrics *Sce_CPU* (percentage), *Sce_Job_Day* (integer), *Sce_Mem* (integer)
- **Note:** this widget can be personalised by editing a simple PHP
- **Behavior in case of alarm:** flashing title background.



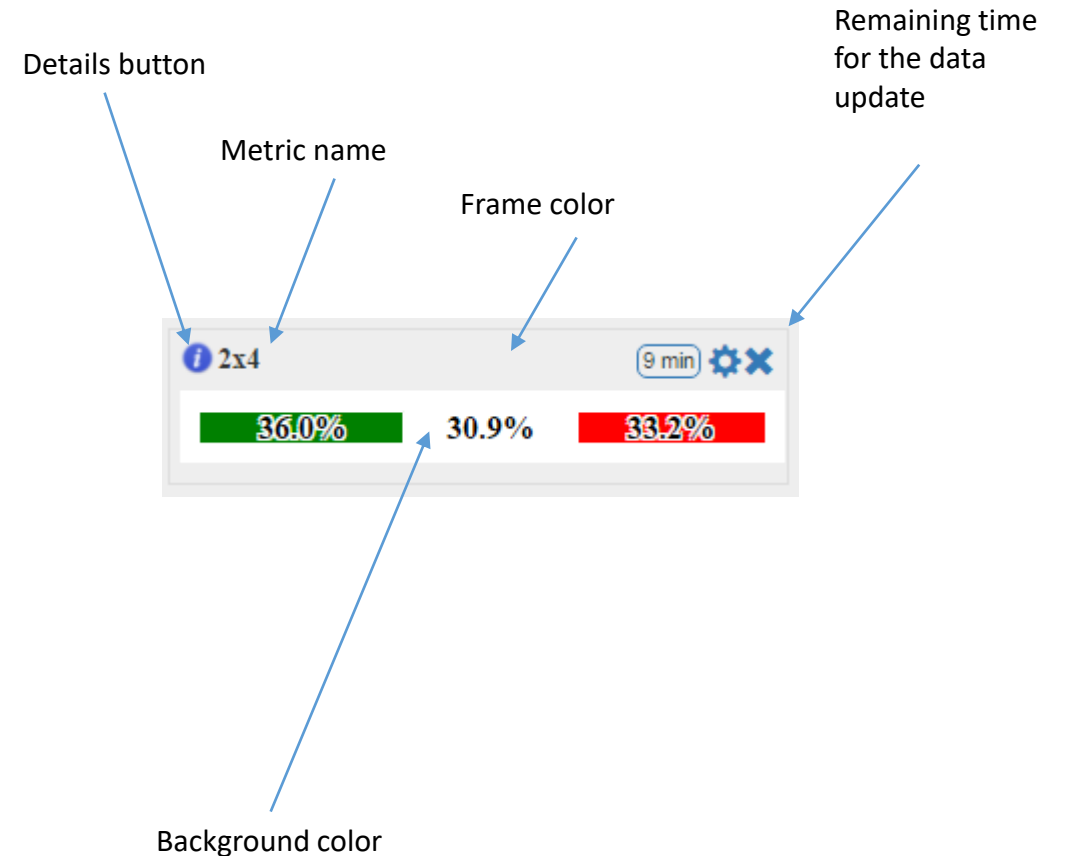
Widget «Single Content»

- **Dimensions:** fixed
- **Columns:** 1
- **Lines:** 2
- **Visualized metrics:** up to 3
- **Editing properties:** Background color, frame color, title, Alarm threshold, alarm comparison operator, frequency of update.
- **Type of data:** integer, float, percentage, textual.
- **Behavior in case of alarm:** flashing title background.



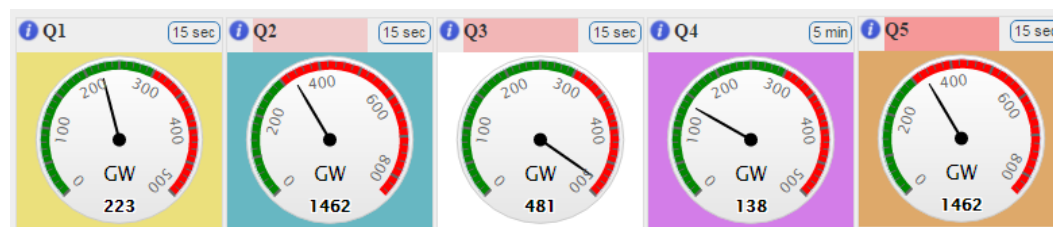
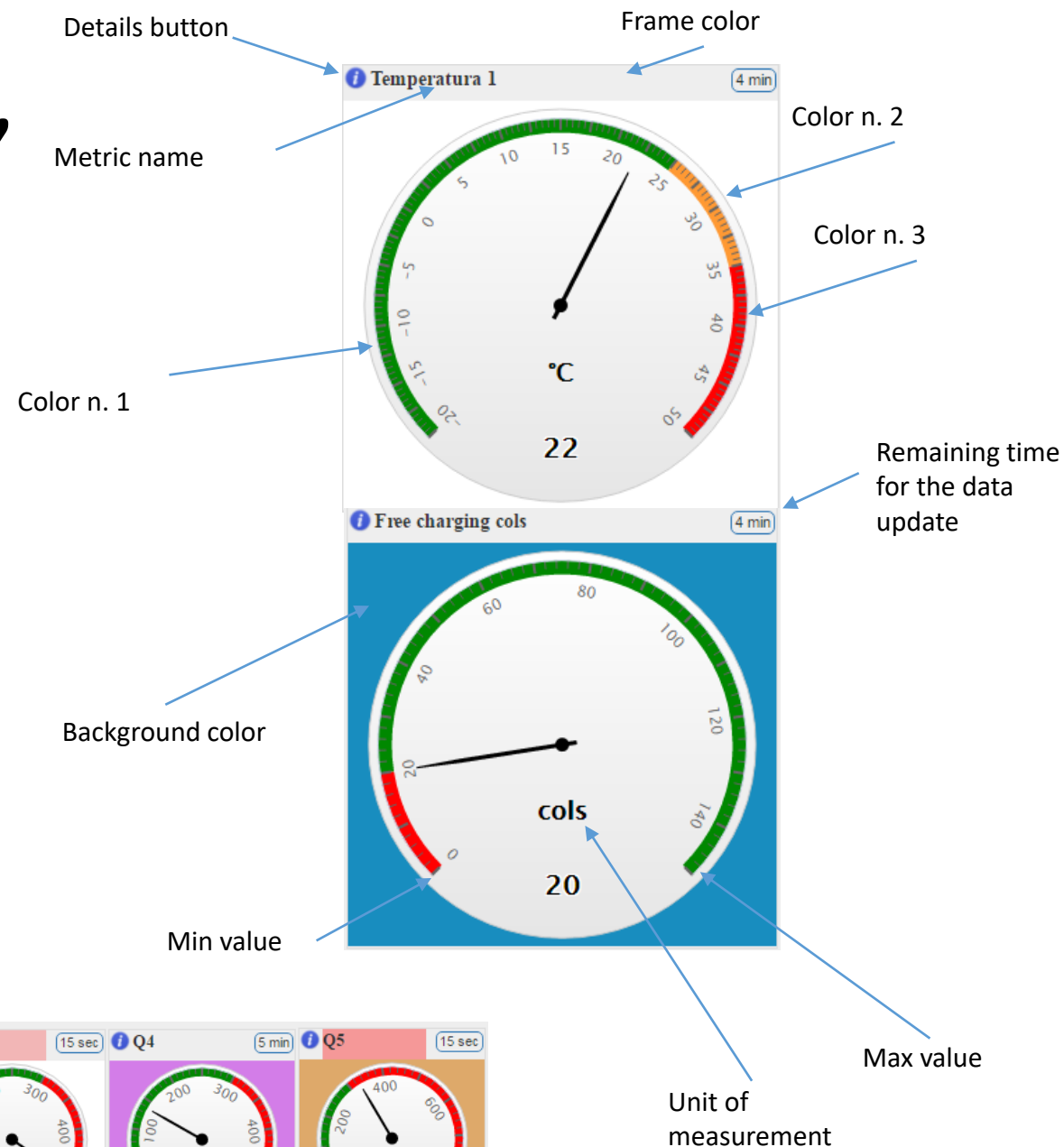
Widget «SmartDS»

- **Dimensions:** fixed
- **Columns:** 1
- **Lines:** 2
- **Metrics number:** 1
- **Editing properties:** Background color, frame color, title, frequency of update.
- **Type of data:** Associated only to the metric *SmartDS_Process* (percentage)
- **Note:** this widget can be personalised by editing a simple PHP
- **Behavior in case of alarm:** flashing title background.



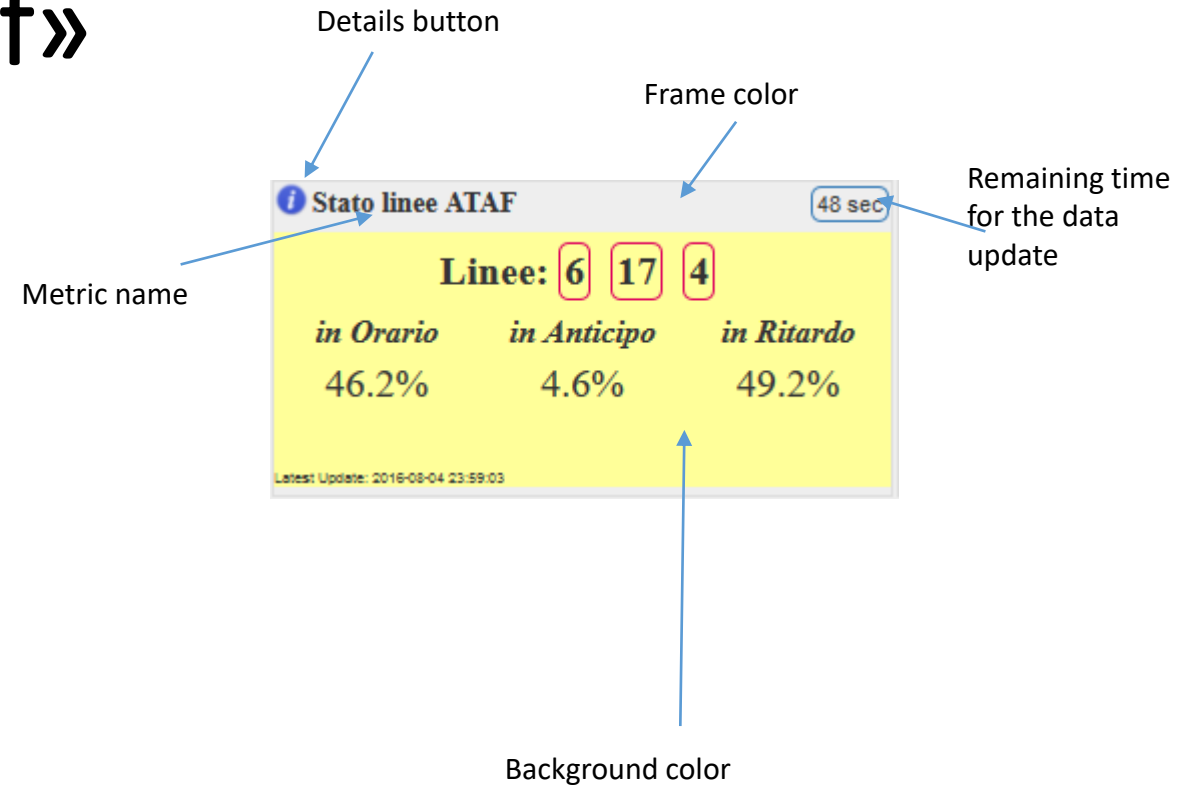
Widget “Speedometer”

- **Dimensions:** variables but predefined (4x2, 8x4)
- **Columns:** 2 or 4
- **Lines:** 4 or 8
- **Visualized metrics:** 1
- **Editing properties:** Background color, frame color, title, Alarm threshold, alarm comparison operator, color n.1, color n.2, color n.3, frequency of update, minimum value, max value, unit of measurement.
- **Type of data:** percentage, integer, float.
- **Behavior in case of alarm:** flashing title background, the needle indicates a value in the range of the color n.3.



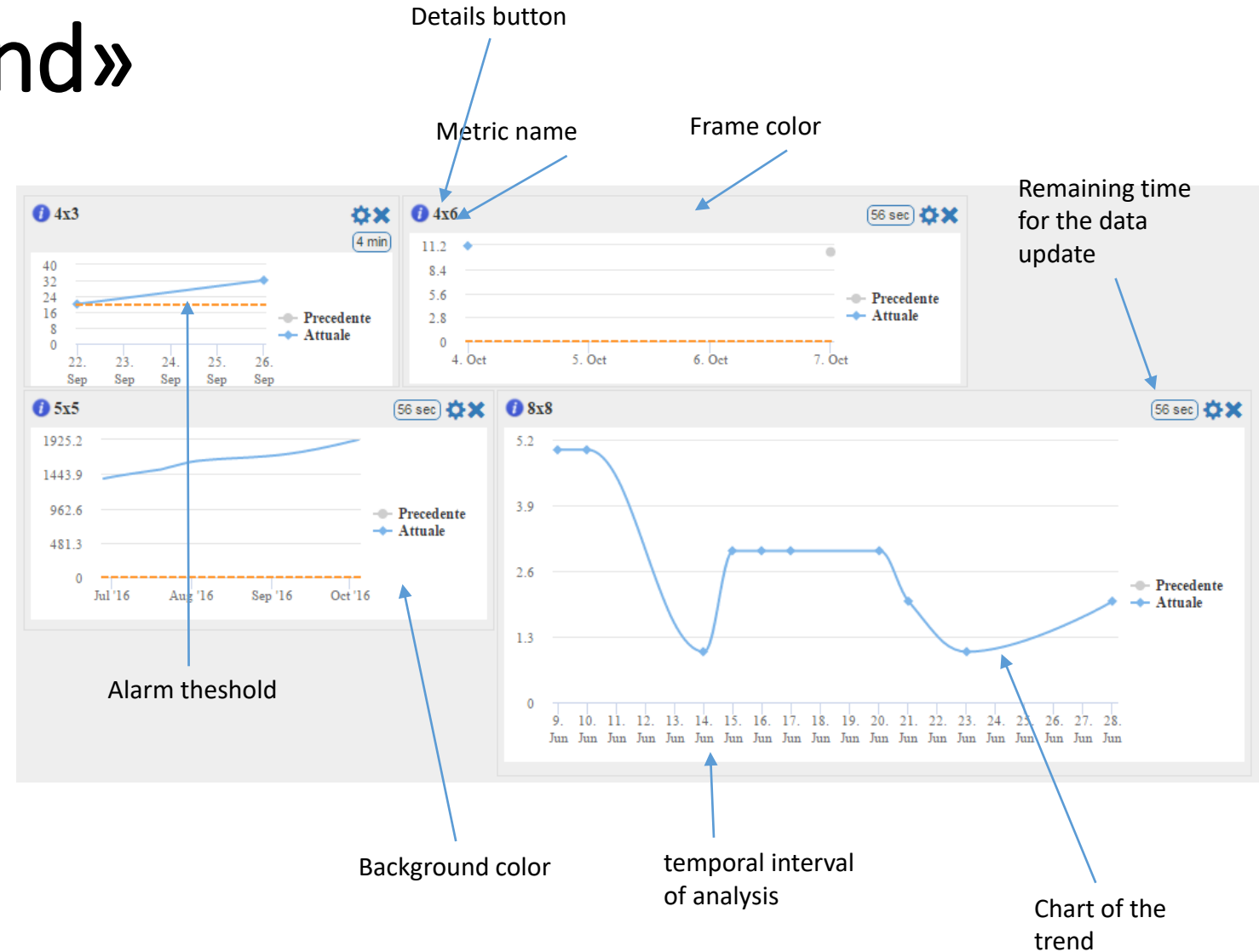
Widget «State Ride Ataf»

- **Dimensions:** fixed
- **Columns:** 2
- **Lines:** 2
- **Visualized metrics :** 1
- **Editing properties:** Background color, frame color, title, Alarm threshold, alarm comparison operator, frequency of update.
- **Tipi di Dati:** associated only to the metric *Bus_state_lines* (percentage)
- **Note:** this widget can be personalised by editing a simple PHP
- **Behavior in case of alarm:** flashing title background.



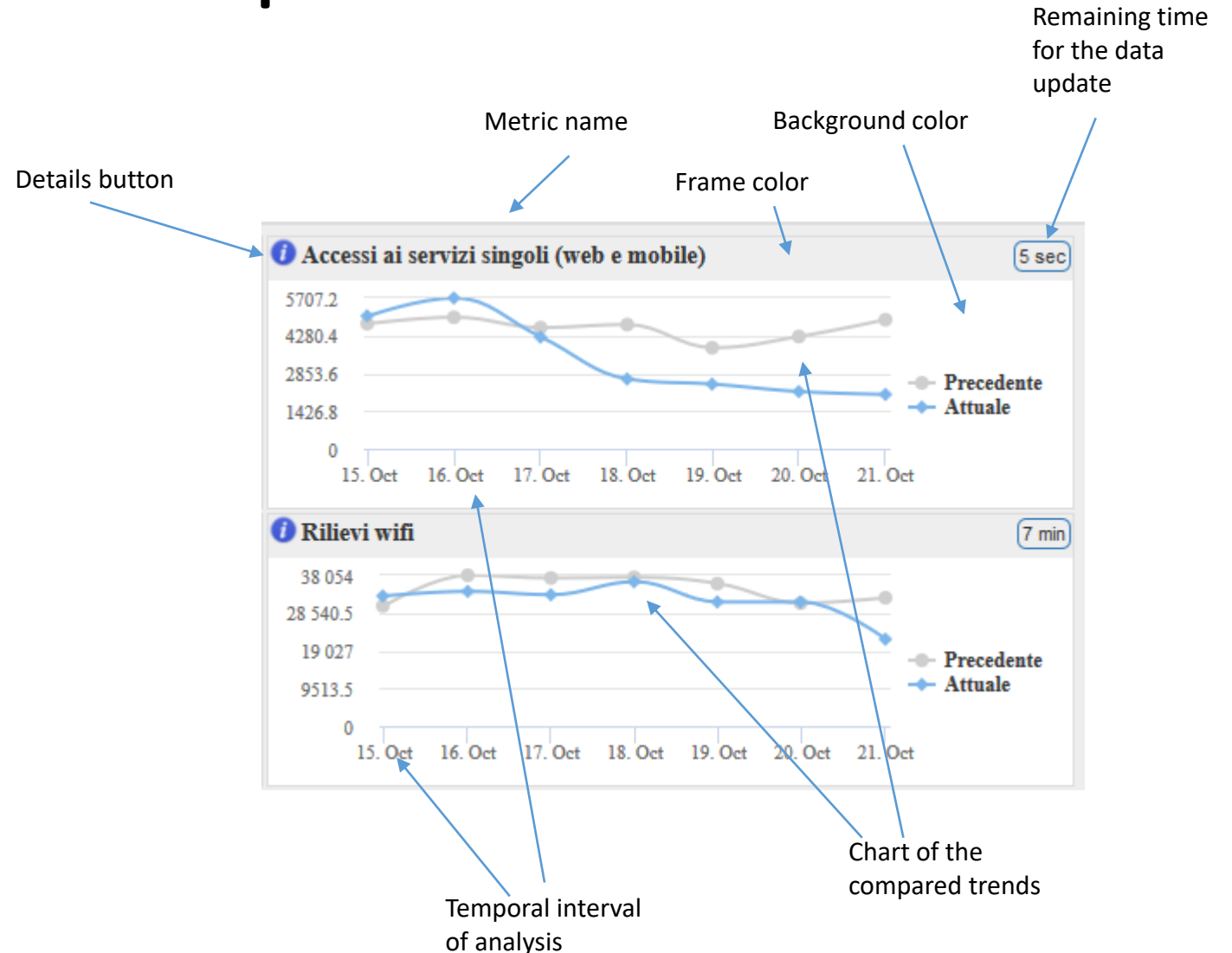
Widget «Time Trend»

- **Dimensions:** variables
- **Columns:** from 2 to 12
- **Lines:** from 2 to 12
- **Visualized metrics :** 1
- **Editing properties:** Background color, frame color, title, Alarm theshold, alarm comparison operator, frequency of update, temporal interval of analysis.
- **Type of data:** associated to different types of metrics (integer, float, percentage)
- **Behavior in case of alarm:** flashing title background.



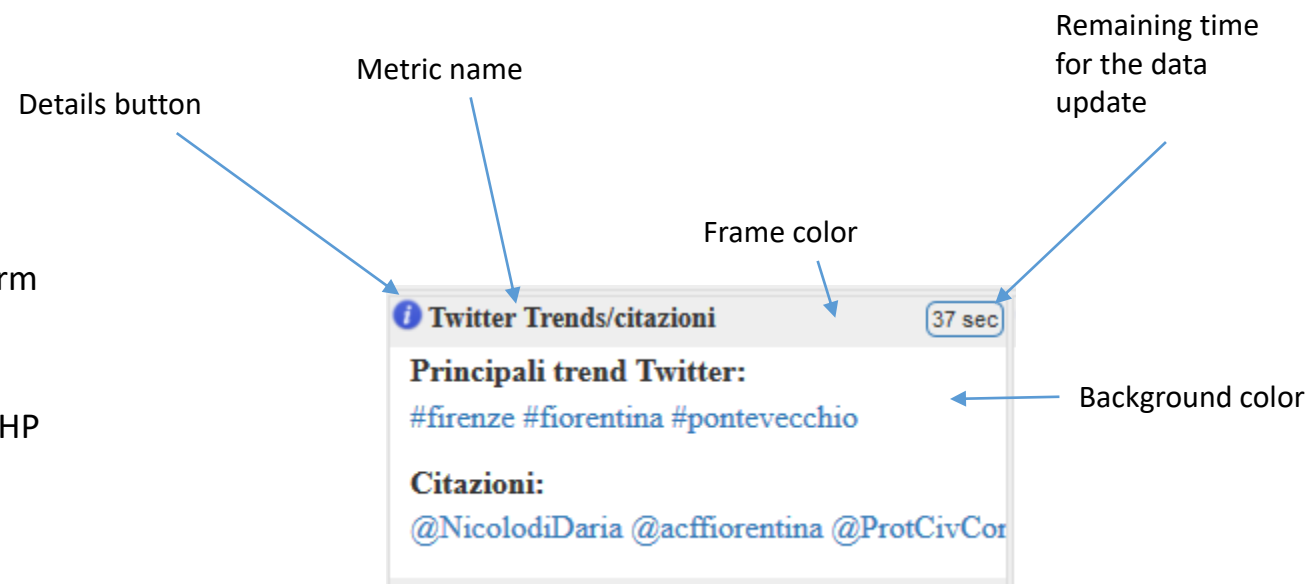
Widget «Time Trend Compare»

- **Dimensions:** variables
- **Columns:** from 2 to 12
- **Lines:** from 2 to 12
- **Visualized metrics :** 1
- **Editing properties:** Background color, frame color, title, Alarm theshold, alarm comparison operator, frequency of update, temporal interval of analysis.
- **Type of data:** associated to varius type of metrics (integer, float, percentage)
- **Note:** this widget can be personalised by editing a simple PHP
- **Behavior in case of alarm:** flashing title background.



Widget “Trend Mentions”

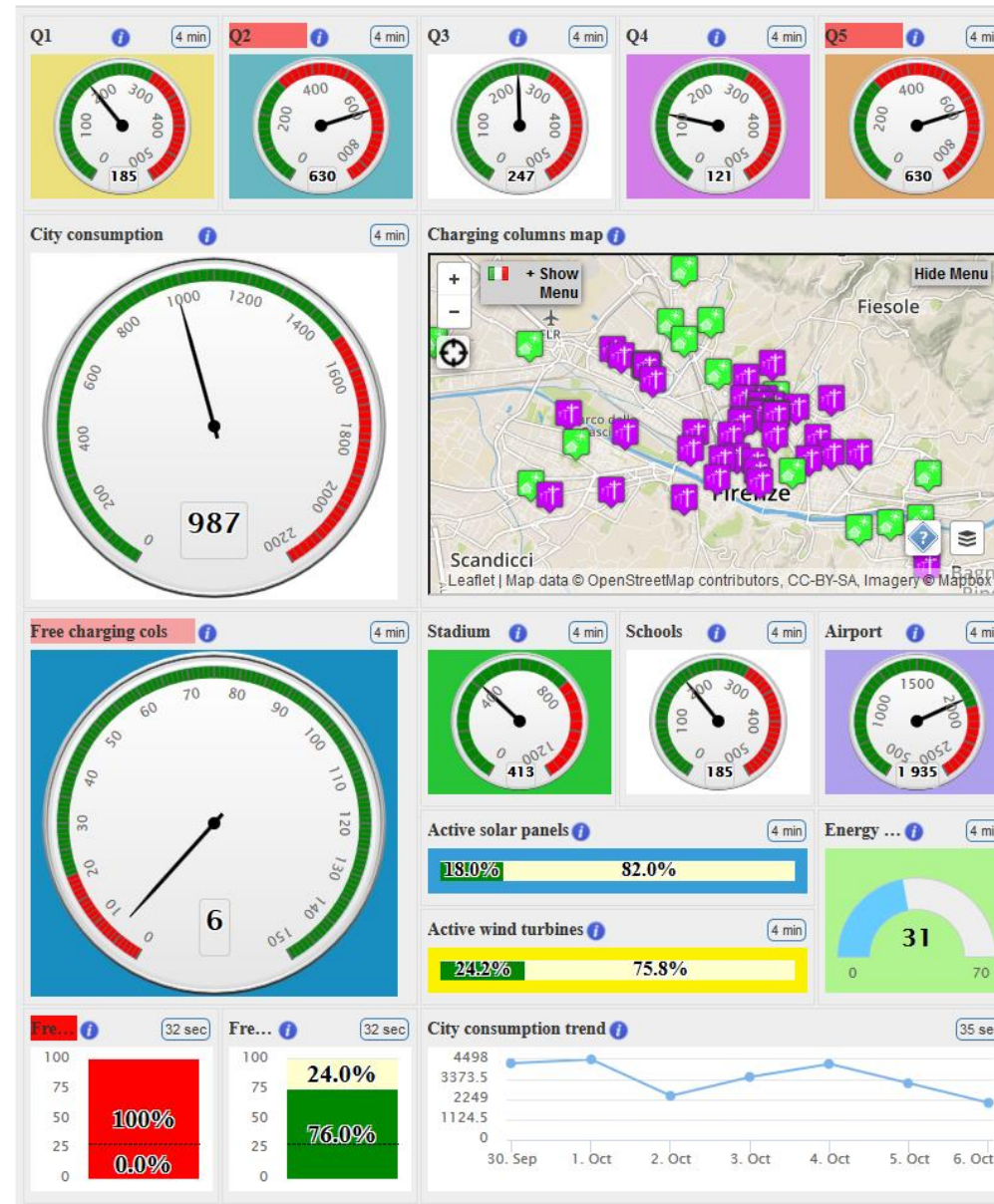
- **Dimensions:** fixed
- **Columns:** 2
- **Lines:** 2
- **Visualized metrics :** 1
- **Editing properties:** Background color, frame color, title, Alarm threshold, alarm comparison operator, frequency of update, temporal interval of analysis.
- **Note:** this widget can be personalised by editing a simple PHP
- **Type of data:** Associated only to the metric *MentionsTrends_FI_Day* (textual)



Energy dashboard

ServiceMap, SmartDS

Thu 6 Oct @ 16:55:11

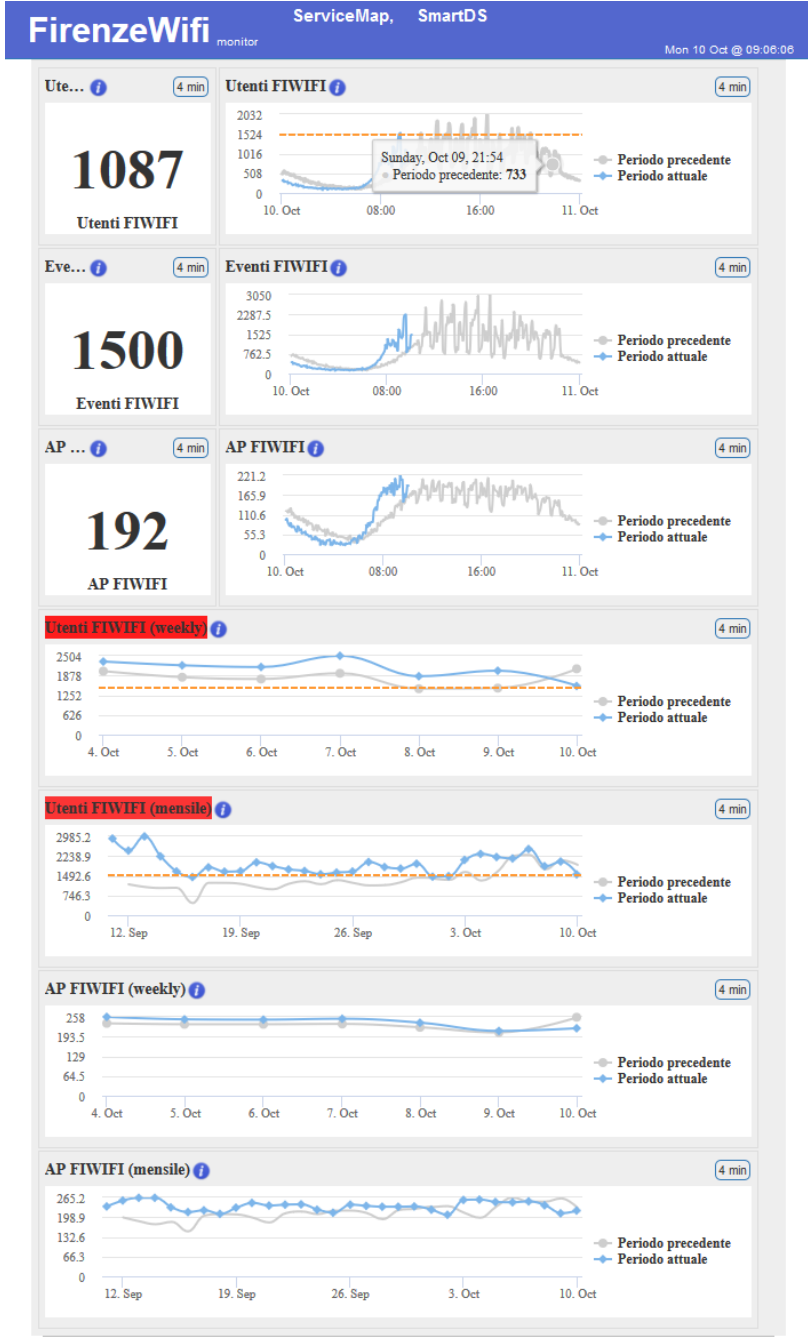
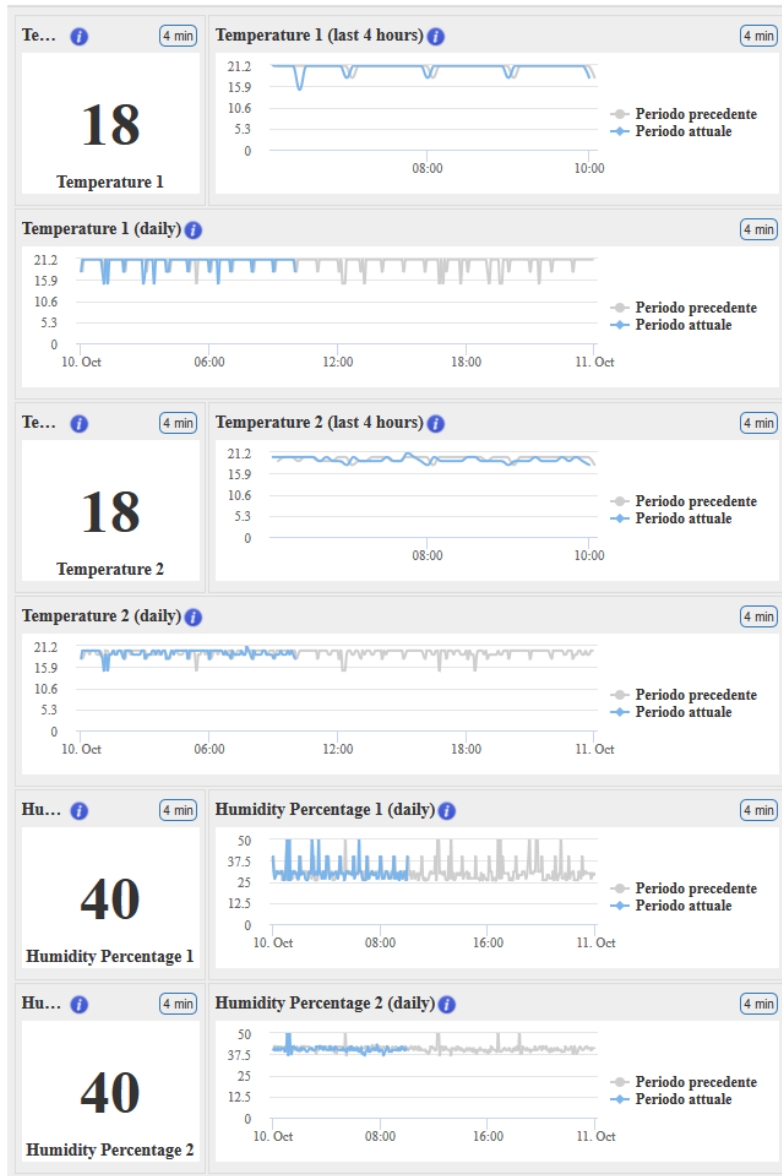


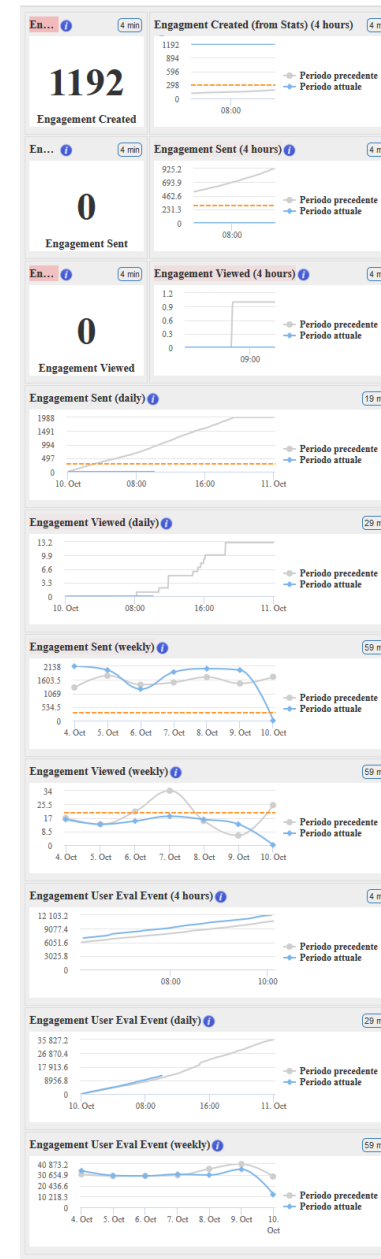
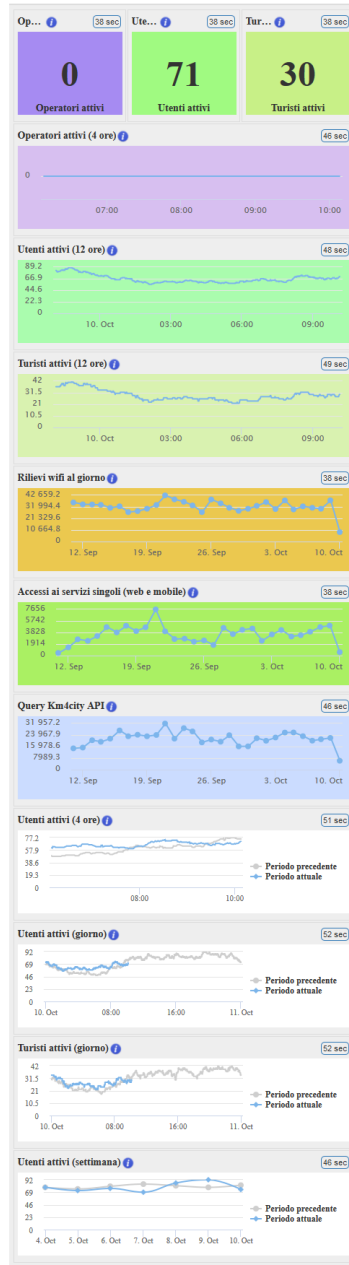
UNIVERSITÀ
DEGLI STUDI
FIRENZE

DINFO
DIPARTIMENTO DI
INGEGNERIA
DELL'INFORMAZIONE

DISIT
DISTRIBUTED SYSTEMS
AND INTERNET
TECHNOLOGIES LAB

<http://www.km4city.org/dashboard/energy.html>



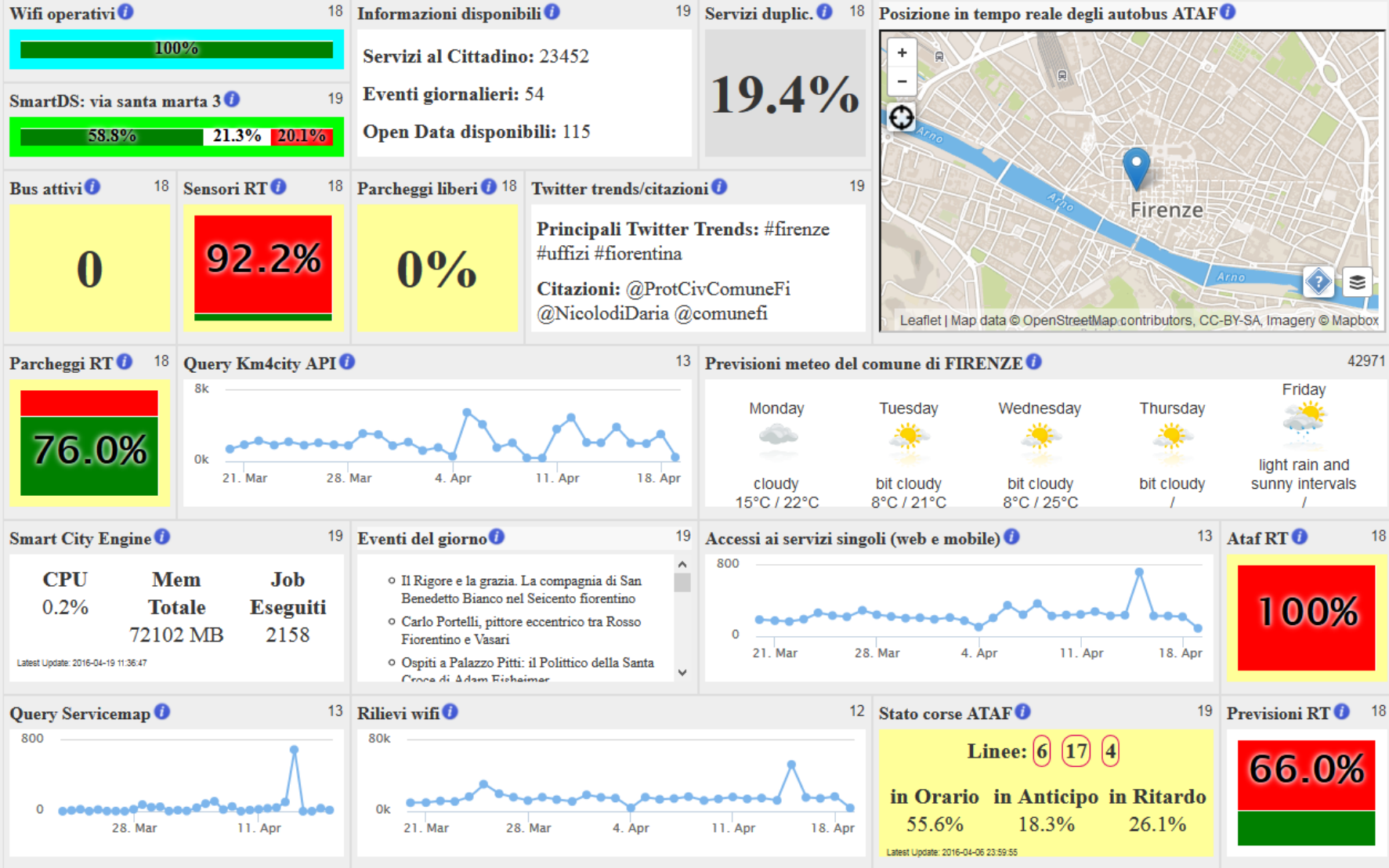


Firenze

43.7693, 11.2560

Tue 19 Apr @ 10:36:11

ServiceMap, SmartDS



twitter 2463 per giorno re tweet 2935 per giorno Twitter Vigilance